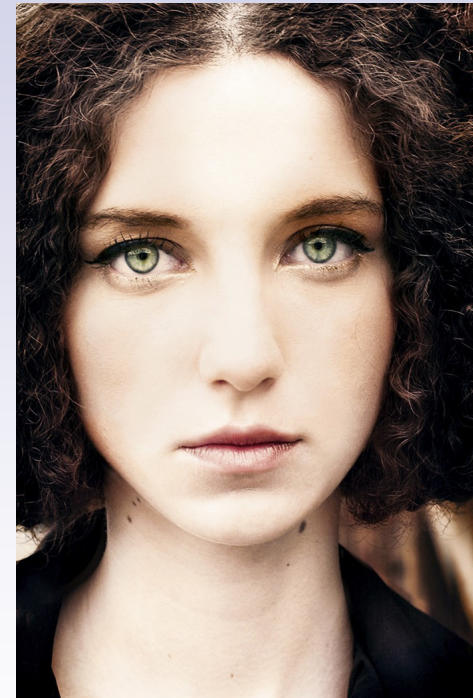


*An Information Booklet
for Tompkins and Seneca County Educators*

Quick Facts: Substance Abuse



This fact booklet is intended to enhance understanding of school personnel about the substance abuse and mental health issues that may be encountered in students. The information included is not exhaustive and should never be used to formulate a diagnosis. Mental health and substance abuse diagnoses should be made only by trained professionals after a thorough evaluation

www.mentalhealthconnect.org

Jayden McCune, Program Director
Possibilities Program & Expanding Possibilities
555 Warren Road
Ithaca, NY 14850

Phone: 607-257-1555 ext. 385

Fax: 607-697-8218

E-mail: jaydnmcss@rackcenters.org

Website: www.mentalhealthconnect.org

Why is Substance Use a Problem?

When a child or adolescent uses substances, their brain is negatively impacted in numerous ways, including altered chemistry, diminished brain activity, decreased blood flow, and brain cell damage. Even a single dose of a substance can affect the brain, and can result in poor school performance, social problems, accidents, violence, risky behavior, and the possibility of an overdose. It can lead to repeated drug use which is associated with a complexity of escalating problems. *The misuse of any substance that impacts brain chemistry and interferes with one's ability to cope with the demands of home, school, and/or relationships can be considered **Problem Substance Use**.* The amount of substance a person uses does not define substance use problems, as substances vary in potency and react differently in different people.



Substance Abuse and Substance Dependence

When people develop a pattern of using substances over time, despite the interference with their responsibilities, daily functioning, relationships and well being, they may have a **Substance Abuse Disorder**.

Substance Dependence occurs when a user develops a tolerance to a substance that results in the need for increased quantity or potency to achieve a desired effect. Many substance dependent people, youth included, spend much of their time obtaining, using, or recovering from the use of substances even if they are aware that a problem has developed.

Co-Occurring Disorders

A person is said to have a co-occurring disorder when they have a substance abuse disorder and a mental health disorder at the same time. Youth struggling with mental health issues are particularly vulnerable to substance use. Nearly 43% of youth who receive mental health services in the US have been diagnosed with co-occurring disorders (CMHS, 2001). Early identification and intervention with mental health problems and youth substance abuse may prevent either substance dependence or mental health issues from progressing to more serious levels.

Getting Linked

Substance Abuse and Mental Health Services Administration (SAMHSA)
www.mentalhealth.samhsa.gov

School Psychiatry Program
Massachusetts General Hospital
www.schoolpsychiatry.org

American Academy of Child/Adolescent Psychiatry
www.aacap.org

National Institute on Drug Abuse
www.nida.nih.gov

www.drugabuse.gov/parent-teacher.html

For all people in our region:

Guide to local youth mental health resources
www.mentalhealthconnect.org

Suicide Prevention and Crisis Service
www.suicidepreventionandcrisiservice.org
607-272-1616 or 800-273-TALK(8255)

For people in Tompkins County:

Dial 2-1-1 (or 877-211-8667) to reach Tompkins County 2-1-1, a local health and human services information and referral program.
Also online at www.hsctc.org

Alcohol and Drug Council of Tompkins County, Inc.
<http://alcoholdrugcouncil.org>
607-274-6288

Cayuga Addiction and Recovery Services
607-273-5500
www.carsny.org

Tompkins County Mental Health Clinic
www.tompkins-co.org/departments/detail.aspx?DeptID=28
607-274-6200

Family and Children's Services of Ithaca
www.fcsith.org
607-273-7494

Mental Health Association of Tompkins County
www.mhaedu.org
607-273-9250

For people in Seneca County:

Dial 2-1-1 (or 877-356-9211) to reach the Finger Lakes Region 2-1-1, a local health and human services information and referral program.
Also online at www.211fingerlakes.org

Seneca County Mental Health Clinic
www.co.seneca.ny.us/dpt-comserv-mental-health.php
315-539-1980 or 800-226-7415

For people in Schuyler County:

Dial 2-1-1 (or 800-346-2211) to reach the 2-1-1 helpline, a local health and human services information referral program.
Also online at www.211helpline.org

Schuyler County Mental Health Clinic
www.schuylercounty.us/mentalhealth.htm
607-535-8282

For people in Cortland County:

Cortland County Mental Health Clinic
www.cortland-co.org/mhealth/clinic.htm
607-758-6100

School Strategies for Students with Substance Abuse Issues

- Make certain that your school has a substance abuse prevention and intervention policy that is focused on improving the health and well-being of students
- Integrate substance abuse prevention, including teaching evidence-based prevention classes starting in early grades
- Provide substance abuse training to parents/families to increase awareness and skill to prevent, identify, and get treatment for child and youth substance abuse issues
- Develop positive relationships with all students, with specific outreach to students who are at risk of or who may be abusing substances
- Maintain clear expectations of students with substance abuse issues, and be flexible where needed
- Use an open, non-judging, educational, fact-based approach in talking and working with students with substance abuse issues
- Offer descriptive feedback to students in a concerned and supportive way, “you look very drowsy, what’s up?”
- Respond consistently and calmly to unacceptable behavior
- Pay attention to any patterns a student may develop, such as leaving the building at a certain time every day, skipping certain classes, or arriving late to school or class
- If there are any suspicions of a student being actively under the influence, send him or her to the school nurse immediately and/or follow school protocols for immediate referral
- Do not try to problem solve or plan with a student when you suspect they are actively under the influence of substances
- Listen to the concerns of peers. Friends may disclose to a trusted adult that they believe their peer is in trouble
- As soon as you suspect substance use in a student, consult with your mental health staff
- Involve the student’s family early and throughout any intervention, as research suggests optimal outcomes when families are involved

Prevalent Signs & Symptoms of Substance Use

If you notice a student with any of the symptoms below or a significant change in mood or behavior that lasts for more than a week, share your observations with the student’s parent and/or guardian and with your school’s nurse and/or mental health support team.



Biological/Physical Symptoms

Changes in body’s ability to self-regulate: may include changes in heart rate, blood pressure, appetite and weight; muscle twitching, weakness or tremors; seizures, lack of coordination, dizziness, blurred vision, dilated or constricted pupils; red, glassy eyes, sweating, nausea, vomiting, respiratory distress, chills

Psycho-motor agitation: may include pacing, hand wringing, picking at skin, fidgeting, and restlessness

Psycho-motor retardation: may include listlessness, slowed speech, thinking or body movements and deterioration of handwriting

Emotional/Cognitive Symptoms

Changes in emotional functioning: may include depressed, irritable mood, nervousness, over-excitability, euphoria, and apathy

Changes in cognitive functioning: may include poor concentration, sensation of slowed time, confusion, rambling flow of thoughts and speech, poor memory and attention

Social/Behavioral Symptoms

Changes in behavioral functioning: may include increased combativeness and competitiveness, lethargy, discontinuation of previously enjoyed activities, becoming more secretive, and engaging in lying behavior

Changes in social functioning: may include involvement in a sudden new peer group or marked isolation from peers

Developmental Variations

Early Childhood (@ 3-7 years old)

This age group is not likely to use substances on their own, but may accidentally ingest alcohol or drugs if they are in circumstances with easy or unrestricted access.



Middle Childhood (@ 8-12 years old)

This age group is most likely to access substances from liquor or medicine cabinets at their or their friends' homes. Additionally, this age group is at high risk for use of inhalants because of easy accessibility.



Pre-Adolescence/Adolescence (@ 12-18 years old)

Pre-adolescent and adolescent youth are most likely to seek drugs and alcohol on their own and as a result have access to a wider range of substances. This age group is also the most likely to engage in high risk behavior when under the influence of substances (i.e. driving, unprotected sex) and are often more sophisticated at hiding substance use than their younger peers. In the 2008 New York State Development Survey for Tompkins County, the most commonly used drugs by middle and high school students were alcohol and marijuana. Of the middle school students who responded to the survey, 9% reported the use of alcohol within the past 30 days, and 2% reported use of marijuana. Of the high school students who responded to the survey, 32% reported use of alcohol within the past 30 days, and 16% reported use of marijuana within the past 30 days.



Cultural Considerations

Substance use issues are "equal opportunity" problems. Regardless of age, race, or socioeconomic status, individuals can succumb to the devastating effects of substance use, abuse, or dependence. There are some risk factors, however, that increase the likelihood that a student will use substances. Some of these risk factors include lack of parental supervision, peer culture of substance use, easy access to substances, and/or a family or community tolerance or acceptance of substance use.



Educational Implications

Research shows that the brain continues to grow and develop into the mid-twenties. As such, children and youth of all ages are at high risk for disruption to healthy brain development when using substances.

Substance use can have a seriously negative impact on a student's learning and ability to be successful in a learning environment. Not only are students unavailable for learning when they are under the influence of substances, but they also won't function well when recovering from use or are craving to use again.

Other possible effects, whether a student is using substances themselves or growing up in a substance abusing home are: fatigue, irritability, anxiety, health problems, tardiness, and truancy. These problems contribute to poor work completion, interpersonal problems with peers or teachers, poor attention and/or poor follow through in school.

